

REPAIR PARTS

MODEL SM-E055 & SM-HE055

Piston Pump 3000-PSI at .29 GPM

CODE:

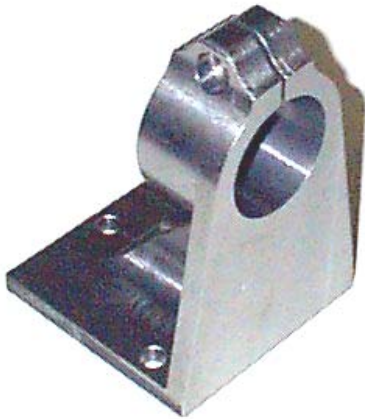
SM-HE055-F2-1/2

H-High Pressure Seal

E055-Volume of Pump

F2- Viton Seals

1/2- Number of Outlets **ISO**



PS2-10S Foot Bracket
Sold Separately



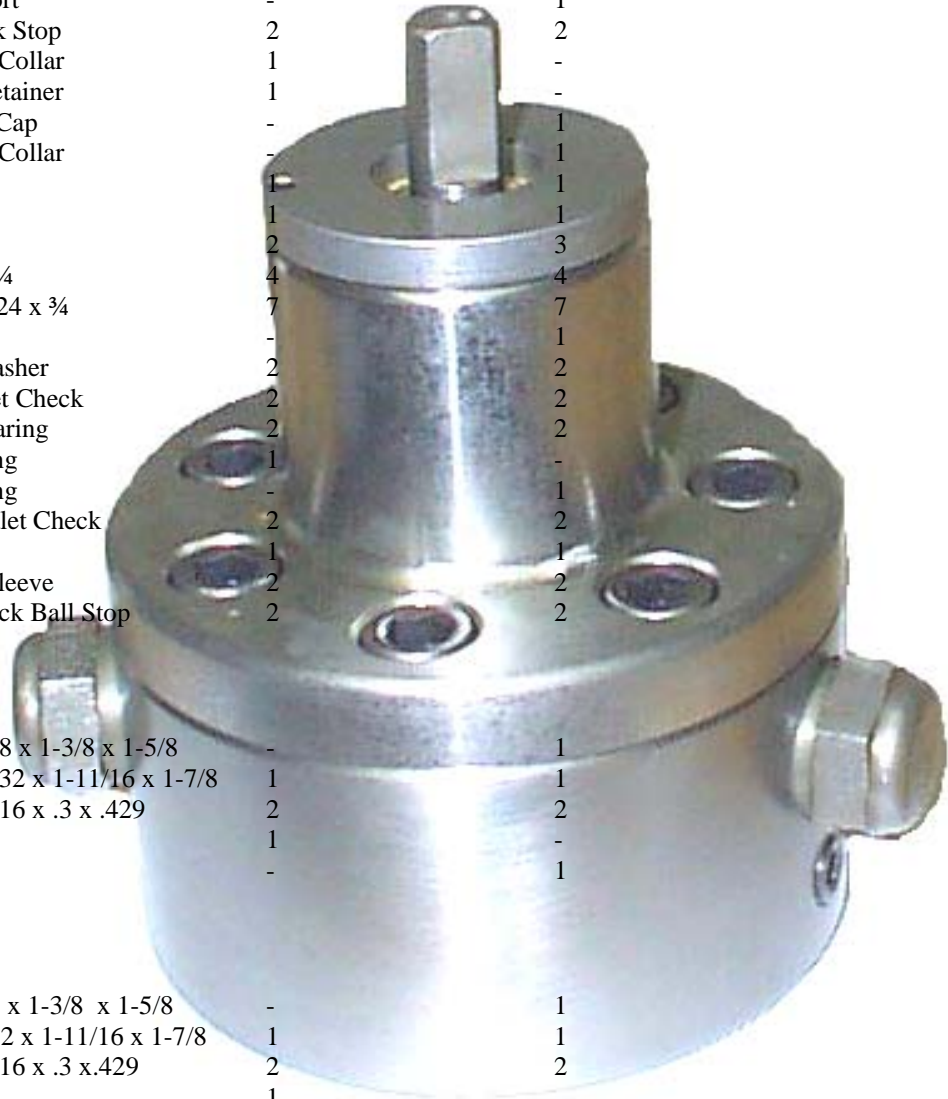
Interchangeable Alternatives

Interchangeable Alternatives

E055

HE055

<u>Part List Number</u>	<u>Description</u>	<u>Quantity</u>	<u>Quantity</u>
SM 250009	Motor End Cover	1	-
SM 250014	HP Motor End Cover	-	1
SM 306796	Body ISO	1	1
SM 308575	Seal Support	-	1
SM 350023	Inlet Check Stop	2	2
SM 350025	Shaft Seal Collar	1	-
SM 350026	Bearing Retainer	1	-
SM 350100	HP Gland Cap	-	1
SM 350302	Shaft Seal Collar	-	1
SM 350312	Body	1	1
SM 350314	Shaft	1	1
SM 400921	Pipe Plug	2	3
SM 401065	Steel Ball ¼	4	4
SM 490024	Bolt 3/8 – 24 x ¾	7	7
SM 490045	8/32 x ¼	-	1
SM 490071	Copper Washer	2	2
SM 490165	Spring Inlet Check	2	2
SM 490167	Needle Bearing	2	2
SM 490168	Ball Bearing	1	-
SM 490206	Ball Bearing	-	1
SM 490218	Spring Outlet Check	2	2
SM 490995	Gasket	1	1
SM 777191	Piston & Sleeve	2	2
SM 795019	Outlet Check Ball Stop	2	2



Buna Seal Kit

SM 401276	O'ring 1/8 x 1-3/8 x 1-5/8	-	1
SM 405212	O'ring 3/32 x 1-11/16 x 1-7/8	1	1
SM 408615	O'ring 1/16 x .3 x .429	2	2
SM 408900	Shaft Seal	1	-
SM 491416	Shaft Seal	-	1

Viton Seal Kit

SM 406576	O'ring 1/8 x 1-3/8 x 1-5/8	-	1
SM 406712	O'ring 3/32 x 1-11/16 x 1-7/8	1	1
SM 407123	O'ring 1/16 x .3 x .429	2	2
SM 490545	Shaft Seal	1	-
SM 491442	Shaft Seal	-	1

Complete Pump Kits Ready to Assemble, available in (8) Packages.

SM E055	SM E055-F2	SM E055-ISO	SM E055-ISO-F2
SM HE055	SM HE055-F2	SM HE055-ISO	SM HE055-ISO-F2

Call: Hydraulic Specialties, Inc.
Distributor at (269) 795-4494 or Fax (269) 795-4495